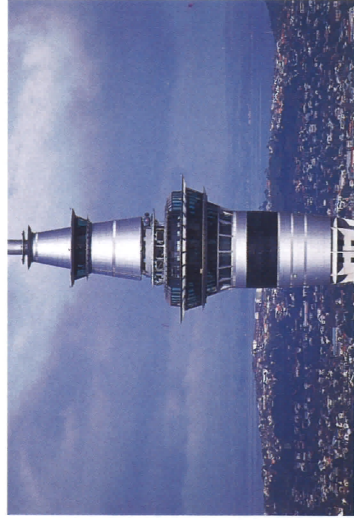


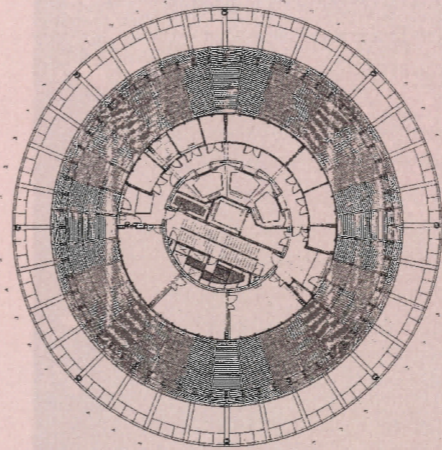
Top of mast (level 71; 355m RL, above mean sea level); mast reduces from 4m to 0.5m in diameter, uses tuned liquid mass dampers for fatigue resistance, vibration reduction.



Sky Deck (level 60; 247m RL), the uppermost public access level; the ultimate concrete pour for shaft jumpform (number 58).

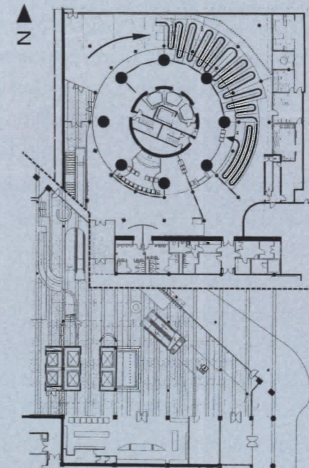


Outdoor Observation (level 53; 222m RL); at 33m, the point of maximum diameter. Unlike the smaller, cantilevered cast-in-place floors above and below, the public levels have composite steel floors, supported by structural steel hangers.



OUTDOOR OBSERVATION

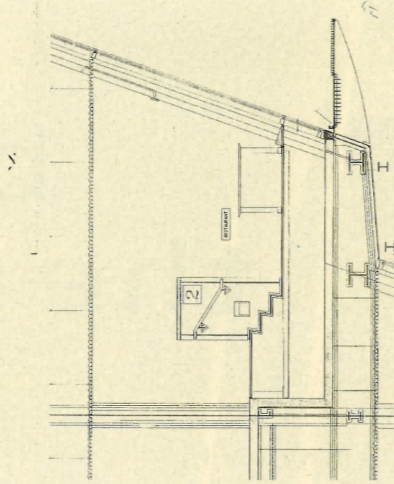
Levels 8-46 (49-193m RL); lobby/riser floors, culminating in 3 refuge levels (44-46).



Public entry/Interpretive Centre (level 1; 22m RL); entering through Sky City atrium, public expectation is "conditioned" with cycled 15-30-minute AV, physical presence of leg bases; tower's design occupancy is 836 persons; three public lifts with 1000 people/hour capacity (45 seconds duration to outdoor observation deck, level 53).



Restaurant (level 52; 218m RL); 240-person capacity; revolving dining floor (1 revolution per 30-90 minutes - see section below); maximum predicted displacement: around 0.5m at this level.

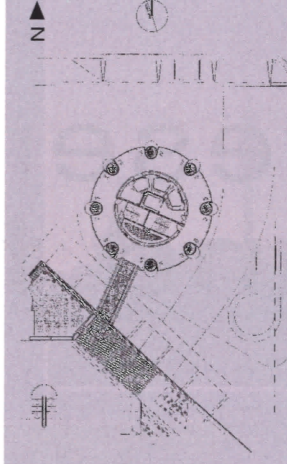
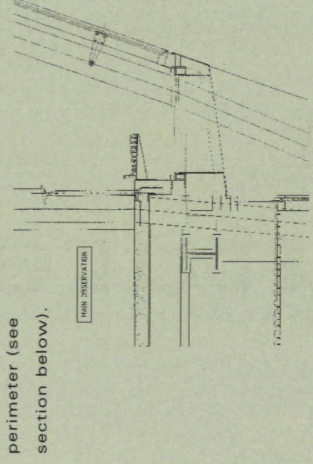


Lower Observation (level 50; 209m RL); overflow for main observation level above.

Communications and broadcast floors (levels 47-49; 197-205m RL)



Main Observation (level 51; 213m RL); view information, audio aids, interactive screens give weather, historical, geographical situation; includes glass floor at inner perimeter (see section below).



Public exit (level 7; 40m RL) through overbridge into Sky City atrium upper levels (plaza is at level 4).

