

architecturenz

# Specifier products guide

ISSUE 16 | JANUARY 2019

Sharing your vision

 altus  
WINDOWS



## Choose your SNUG Home

Choose your SNUG home from these 12 smart and sustainable secondary housing options for your backyard.

[snughome.nz](https://snughome.nz)

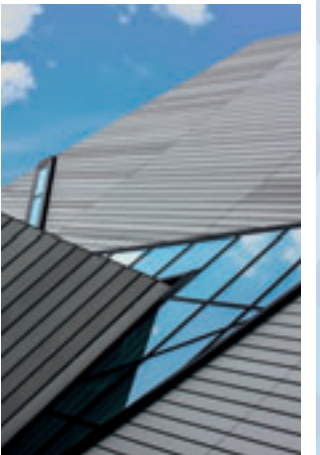
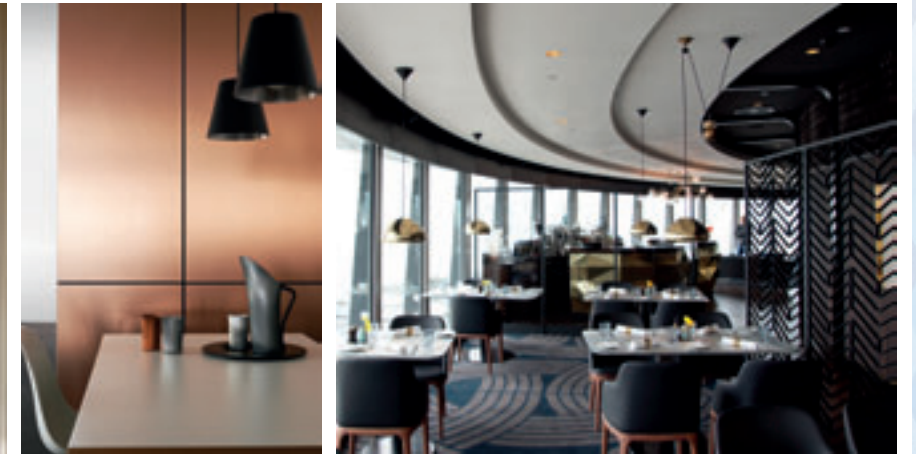


# architecturenz

# Specifier products

# guide

JANUARY 2019



#### PROJECT MANAGEMENT

Mark Lipman

#### DESIGN SERVICES

André Kini

Thomas Cannings

#### PUBLISHER

Nathan Inkpen

#### ADMINISTRATION

Elliot Ferguson

The Specifier Products Guide 2019 is a special supplement to *Architecture New Zealand*. *Architecture New Zealand* is published bimonthly by BCI New Zealand Pty Ltd, Level 2, 409 New North Road, Kingsland, Auckland, New Zealand. Postal address: Private Bag 99915, Newmarket, Auckland 1149, New Zealand. Tel 09 846 4068. Fax 09 846 8742.

Advertising statements and editorial opinions expressed in the Specifier Products Guide do not reflect the views of BCI and its staff, unless expressly stated. The publisher disclaims any responsibility for any firm or individual failing to perform the services advertised in this publication.

**agm**  
A Division of BCI New Zealand

## Contents

**02** PrefabNZ

**06** Henry Brooks

**07** Stratco

**08** Ambitec

**09** Car parking  
Solutions

**10** BuildNZ

**12** Formica

**13** Marley

**14** Jayline

**15** Omega Windows

+ Doors by McKechnie

**16** Hettich

**17** Escea

**18** Quick-Step by  
Floorscape

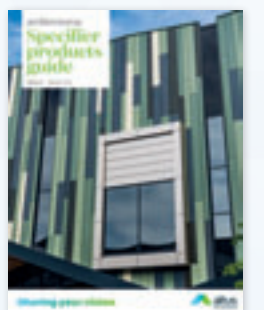
**19** Design Laminates

**20** Ardex WeldTec

**21** ArchitectureNow

**22** AIS

**23** ALTUS Windows



**ON THE COVER** The new Hoyts EntX Christchurch.



## TILEABLE SHOWER TRAY – NEW BY HENRY BROOKS

Sourcing a good quality tileable shower tray, which will withstand the rigours of daily use and house movement without causing heartache in the years to come, can be difficult.

### We've now combined our

considerable experience with acrylic shower trays to develop a one-piece tileable shower tray with built-in fall and a low step. This tray also enables the use of a standard 90mm easy clean trap, which helps to keep both the purchase cost and the install cost down. The tray also reduces the time to install a tiled shower tray and does not require waterproofing on the bathroom floor. Another advantage is this design enables you to place the tray on an existing polished wooden floor or the second floor of an existing house without the normal concerns of house movement causing leaking.

### Tileable shower tray features:

- 1 piece tray – no joins
- Built in 30mm up-stands
- Uses a std 90mm easy clean shower waste
- Very fast install – saves time and money
- Pre-shaped floor
- Stainless steel grate – removable
- No waterproofing of tray required
- No permit required
- Ideal for upstairs wooden floors
- Tested to withstand use by 200kg person

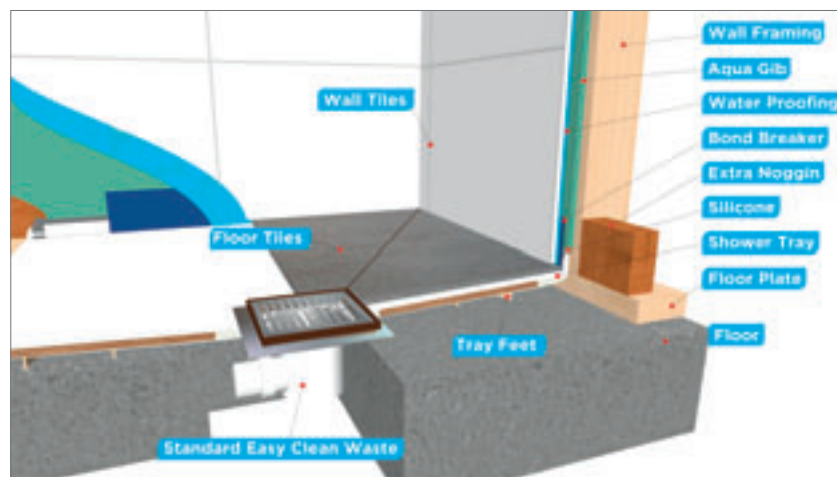


PHONE 09 913 3110

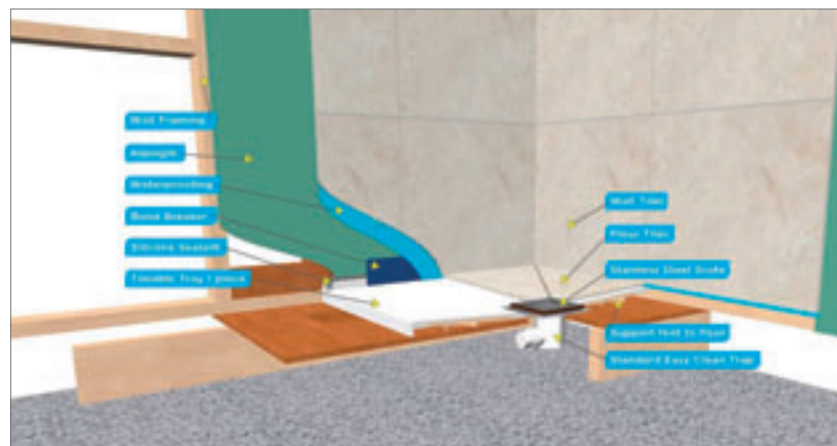
WEBSITE [henrybrooks.co.nz/tileable-shower-tray/](http://henrybrooks.co.nz/tileable-shower-tray/)



ABOVE: Tileable tray half tiled to show how the tiles fit to tray.



ABOVE: Cross section detail of tileable shower tray on concrete floor.



ABOVE: Cross section detail of tileable shower tray on wooden floor.

## How To. STRATCO



Stratco is a manufacturer and supplier of a diverse range of roofing, cladding and outdoor products, and with branches in Rotorua, Napier, Christchurch and Cromwell, they can service your needs throughout the country. Their extensive range of products include:

### Roofing and Walling

Supply, fabrication and installation of:

- Hiland Tray (concealed fix tray profile)
- Corrugate
- Superdek (5 rib)
- Trimline (6 rib)
- Stratco 900 (commercial profile)
- S7 (commercial profile)

### Aluminium Composite Panel

Supply, fabrication and installation of a full ACP cladding service for residential and commercial.

### Rainwater Goods

Supply, fabrication and installation of:

- Downpipes
- Rainwater heads
- Chimney caps
- Concept fascia
- Stratco Continuous fascia
- Quad gutter
- Half round gutter
- Smoothline gutter (half round profile with internal brackets)
- Quarter round gutter
- VC gutter
- OG gutter
- Folded and box gutters



### Outdoor Product Solutions

Supply and installation of:

- Louvre systems
- Fixed verandas
- Carports
- Garden sheds
- Slat fencing
- Aluminium pool fencing
- Panel fencing

### Pressing and Fabrication

Manufacture of a range of mild steel and stainless steel products to create bespoke solutions for your project.



TOP: Hiland Tray.

CENTRE: Aluminium Composite Panel to fascia.

ABOVE: Integrated Louvre and fixed veranda.

From design through to manufacture and installation, Stratco's knowledgeable and experienced team will use their 'How To' to help you develop a great outcome for all of your project requirements. Contact us today!



PHONE 0800 787 282 WEBSITE [stratco.co.nz](http://stratco.co.nz)





ABOVE: Bone China stepped ceilings, Sugar Club by Jasmox Architects.

RIGHT: InterAct wall panels, Quadrent by Jessop Architects.



ABOVE: Tierrafino with formwork lines, Temple Invest by Stack Interiors.

RIGHT: Suave feature wall and counter, Tosca & Salome by Material Creative.



## AMBITEC – AMBIENCE BY TECHNOLOGY

Ambitec crafts high-end commercial and residential interior polished-plaster finishes that are enduring and beautiful in their simplicity.

Through various degrees of polishing, each finish can be honed to enrich and deepen the depth of colour and texture, adding visual movement across the surface where the space demands it.

Available in four bespoke finishes, Ambitec Tierrafino, Ambitec InterAct, Ambitec Suave and Ambitec Bone China, each finish is handcrafted and uniquely tailored to suit the needs of the client and the space.

### Ambitec Tierrafino

Utilising all the earthy properties of clay and fine sand aggregates, Tierrafino is an extremely versatile finish that can be highly textured, formed or polished to a dense satin gloss.

### Ambitec InterAct

A unique decorative system that offers the versatility of plastered panels arranged to create texture and pattern.

### Ambitec Suave

From silky smooth to heavily distressed, low sheen to high gloss, the options with Suave are endless. A high-quality finish, ideal for residential and commercial interiors, that can be crafted to meet all needs.

### Ambitec Bone China

With a pearly lustre look and ‘crazing’ that occurs during the final stages of the curing process, Bone China’s subtle nature makes it particularly suitable for feature walls and ceilings.



PHONE 027 595 9571 WEBSITE [ambitec.co.nz](http://ambitec.co.nz)

# More space for cars and trucks

## Car Stackers - 15 years in operation



## Home Car Turntables

## and Truck Turntables

## New Zealand's No.1

Bob Haswell

E [info@carstackers.co.nz](mailto:info@carstackers.co.nz)

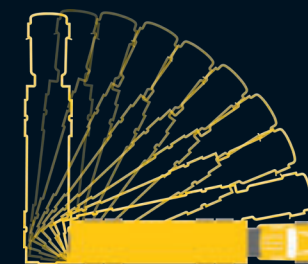
M 027 435 0580

T 03 540 2755

PO Box 379, Motueka  
Engineering Division - Auckland  
Head Office - Nelson

[www.carstackers.co.nz](http://www.carstackers.co.nz)

[www.truckturntables.co.nz](http://www.truckturntables.co.nz)



Truck Turntables

Car Parking Solutions  
incorporating Car Stackers NZ Ltd





# BuildNZ

**82%\***  
of visitors will make  
contact with an  
exhibitor post show

**86%\***  
of exhibitors were  
'satisfied' to 'very  
satisfied' with the  
quality of visitors

**BuildNZ is New Zealand's  
leading award winning  
trade show for the build,  
construction and design  
industries**

**Uniting the industry to  
build a better NZ**

**23-25 June 2019**

ASB Showgrounds Auckland

[www.buildnz.com](http://www.buildnz.com)



'A fantastic trade show that  
brings together the most  
interesting and innovative  
suppliers from across the  
construction industry.'

Hon. Phil Twyford, Minister of Housing  
and Urban Development

**70%\***  
of visitors are  
responsible for  
buying decisions



Featuring the  
KiwiBuild Summit

**5000+ visitors\***

Builders, Architects, Specifiers,  
Designers, Business Owners, CEO's  
and Planners

**\$513,000,000\***

Onsite buying power

**\$158,000\***

Estimated average  
exhibitor sales post show

**Interested in Exhibiting**

Contact Heather Lowrie  
021 520 920

Email: [heather@xpo.co.nz](mailto:heather@xpo.co.nz)

\*2018 Visitor Survey

**Audited visitor statistics available to download for free @ [www.buildnz.com](http://www.buildnz.com)**

Supported by





## FORMICA® TAKES CARE OF DESIGN & FUNCTION

Formica has the know-how to cater to all areas of your project.

**Aesthetics** – With the Formica® colour range and design flexibility, creating interiors that deliver a calming and uplifting environment for your project is easy.

**Durability** – From regular wear and tear created by public interaction and foot traffic, through to the demanding needs of high-impact or high-wear environments, Formica® understands the importance of choosing the right materials to stand the test of time.

**Specialist Performance** – Whether it's chemical resistance, an ability to handle strong impact, fire retardant properties or surfaces designed to handle extreme wear and tear, the team at Laminex New Zealand can advise on the most suitable and effective Formica® products to suit your project's particular needs.

**Flexibility** – When it comes to cost and efficiency, it pays to balance out all areas of your project – from the specialist requirements to the general, more routine of product attributes. At all levels you need products that the fabrication, joinery and installation trades are used to and can work with creatively, without overreaching the project budget. ♦

TOP RIGHT: Adding glamour to your space with Formica® DecoMetals.  
 RIGHT: On trend decors with Formica®.



PHONE 0800 303 606 WEBSITE formica.co.nz



# INSIST ON MARLEY OPTIM® DWV SANITARY SYSTEMS

Don't risk your reputation by specifying anything less. Marley has six reasons why you should insist on our OPTIM® DWV Sanitary System.



### Support

New Zealand's only DWV system on Masterspec. In addition to Marley's highly experienced and qualified technical team you have access to a nationwide team of Territory Managers and an award-winning customer service team. We are here when you need us.



### Quality Assurance

Marley's experienced technical and production teams ensure quality by rigorously testing Marley OPTIM® DWV products in Marley's onsite laboratory. Marley's Manurewa site has IANZ accreditation.



### Certification

Third party auditors rigorously check Marley's quality production processes and product against the AS/NZS 1260 standard which is reinforced by Marley's ISO 9001 accreditation.



### Proven Reliability

Marley has a longstanding reputation for reliability with over 30 years proven experience manufacturing the Marley OPTIM® DWV range for the New Zealand market.



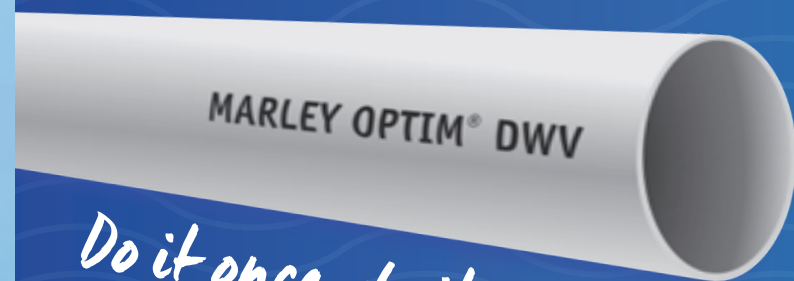
### Full Range

Marley supplies an extensive range of over 300 compatible pipes, fittings and accessories. This ensures compatibility and system performance.



### Recyclable

Marley operates a uPVC recycling programme as part of our ISO 14001 environmental management system. We are committed to a sustainable future.



*Do it once, do it right!*





# Jayline redefines design and performance across its range.

UL200. NEW ZEALAND'S MOST EFFICIENT ULEB.

The Jayline UL200 provides the perfect balance of performance and beauty. Inspired by the latest European designs, this fire will enhance any Kiwi home, and its unique engineering will put it at the top of the list of any discerning homeowner. The UL200 is the most efficient ULEB in the country, meaning you use less

fuel, reload less often, leave less ash and release less harmful emissions into the environment. Fully automated and user-friendly, the Jayline UL200 is the forward-thinking, innovative choice in wood fires.



**SOFT GLIDE**  
ASH DRAWER



## Jayline FR400 and FR300 Wood fires

The Jayline FR series has been designed in response to our 2017 national online survey to provide exactly what our customers want in a fireplace.



The FR series fires feature an 8mm cooktop, a Soft Glide Ash Drawer to make cleaning easy, and are available in clean air or rural options to suit every home.

The FR400 has the largest window in its class and is the perfect choice for those wanting great heat output and a beautiful classic look for larger homes 150-220m<sup>2</sup>, while the FR300 effortlessly warms homes 100-180m<sup>2</sup>.

Jayline FR400



OUTPUT  
20kW



NES & ECan APPROVED  
0.69g/kg

Jayline FR300



OUTPUT  
16kW



NES & ECan APPROVED  
0.7g/kg



## LEADING NEW ZEALAND IN SUSTAINABLE JOINERY

We're leading the industry with aluminium joinery featuring 80 per cent or more recycled content.

### OMEGA and McKechnie Aluminium

is the only aluminium extrusion business in New Zealand to operate a remelt facility for recycling aluminium and retaining all the aluminium's properties. It is third-party environmentally certified with a high recycled content and therefore low carbon footprint.

Our low carbon footprint of 1.21kg of CO<sub>2</sub>e per Kg of aluminium on a Scope 1 and 2\* basis, which is 90% better than the global average (11.5kg<sup>^</sup> CO<sub>2</sub>e per kg of aluminium) is CEMARS<sup>®</sup> third party certified. OMEGA by McKechnie<sup>®</sup> is the first New Zealand aluminium joinery manufacturer to achieve third-party CEMARS<sup>®</sup> product certification by Enviro-Mark Solutions Ltd.

### OMEGA Thermal Break technology

is unique in this part of the world. Developed in New Zealand using advanced European technology, our Thermal Break is positioned to the outside of the joinery, which means the cold does not have the chance to get near the warmth inside. Therefore it performs much better as a "barrier", which results in advanced thermal performance.

### The OMEGA Thermal Series

was benchmarked and showed a 36% improved ("u" value) thermal performance compared to one of its standard competitors. The innovative OMEGA Thermal Series is also designed to significantly lessen the Bi-Metallic effect which occurs in most joinery products.



OMEGA by McKechnie<sup>®</sup> is increasingly becoming the aluminium of choice in commercial applications and was used in:

- The Christchurch Bus Interchange
- BUPA's Riverstone Retirement Village, Palmerston North
- Waste Management's Office and Depot, Auckland
- The Award-Winning Ramaroa Heritage Centre, Kapiti Coast

ABOVE: Ramaroa, the new Heritage Centre and award-winning project at Queen Elizabeth Park, Kapiti.



**OMEGA**  
WINDOWS + DOORS  
BY MCKECHNIE

PHONE 0800 500 141 WEBSITE omegawindows.co.nz

\*Full Life Cycle is 5.62kg of CO<sub>2</sub>e / Kg of aluminium. \*Source: Rio Tinto



## SHOW A NEW SIDE WITH ARCITECH

ArciTech has a timeless, sleek design that fits into any kitchen and home environment. Made of high quality materials, the components are coordinated for a consistent design thread.

### Opens without handles, closes with Silent System

Push to Open Silent drawers are easy to open without handles, gently and quietly closing again from just a slight turn of the wrist. With synchronisation, the system can be activated from the edges of large drawer fronts, even with narrow front panel reveals.

### Versatility that knows no bounds

The ArciTech drawer system now impresses with Designer Profiles making differentiating and individualising standard ArciTech drawers even easier. A deceptively realistic metal or wood look can also be added at a later date for a fast design upgrade.

### Designed and manufactured in Germany

Performance will be a key factor as the trend in kitchens and living rooms is seeing drawers getting wider and higher, front panels larger and heavier. 40, 60 and 80kg loading categories make the ArciTech drawer system's smooth, quiet running action a particularly valuable mark of quality.

Easily create your unique combination with ArciTech. Always another look, always easy. Welcome to the many-sided line-up by ArciTech! ◆



**ABOVE:** ArciTech Champagne drawer sides compliment both warm and cool tones and with the handleless look and convenience of Push to Open Silent system.



**RIGHT:** Brushed Chrome look Designer Profiles with ArciTech Anthracite drawer sides makes for a modern classic combination in this internal kitchen pantry.



**LEFT:** ArciTech in Silver with glass DesignSide gives a light and airy feeling to an extremely sturdy pot and pan drawer, with up to 80kg weight capacity.

**Hettich**

PHONE 0800 438842 WEBSITE [hettich.co.nz](http://hettich.co.nz)



## Grill, then chill.

Take your flame grilling and party hosting to the next level with Escea's Outdoor Fireplace Kitchen.

The wood fire comes equipped with everything you need to create a smoky meat lovers feast, giving you the ultimate outdoor dining experience. Once the flame cooking is done, it transforms into a roaring fire where you can chill right into the small hours.

Learn more at [escea.com/ek-series](http://escea.com/ek-series)

FIRE BY **escea.**



## QUICK-STEP INTENSO TIMBER COLLECTION

Discover Intenso, the first prefinished Chevron timber floor with easy click installation.

### QUICK-STEP TIMBER COLLECTION

Boasts an eye-catching Chevron pattern, coupled with an unparalleled ease of installation. Finished with an extra matt lacquer to protect and enhance the natural timber features, the Intenso collection can transform any project.

### CREATION OF INTENSO

The brand new Intenso Timber Collection is based on the Hungarian herringbone design, a pattern that once graced the most majestic palaces and is right on trend today. Different planks with various widths and structures are hand-selected to be brought together in a harmonious and balanced whole. The extra matt finish offers the authentic look of an oiled floor with the resistance of lacquer.

With five colours available exclusively for the New Zealand market, there will be a hue to suit every palette and style.

### INTENSO'S UNIQUE FEATURES:

- Prefinished surface allows for immediate use after installation
- Highly advanced extra matt lacquer for higher wear, stain and scratch resistance
- Comes with the world's strongest click system Uniclic®, making installation easier and quicker
- Floating or glued installation
- Hand selected planks create ultimate authenticity
- PEFC-certified and sourced from sustainably managed forests
- 25-year residential warranty

Quick-Step is brought to you by Floorscape New Zealand. For more information please visit [www.quick-step.co.nz](http://www.quick-step.co.nz)



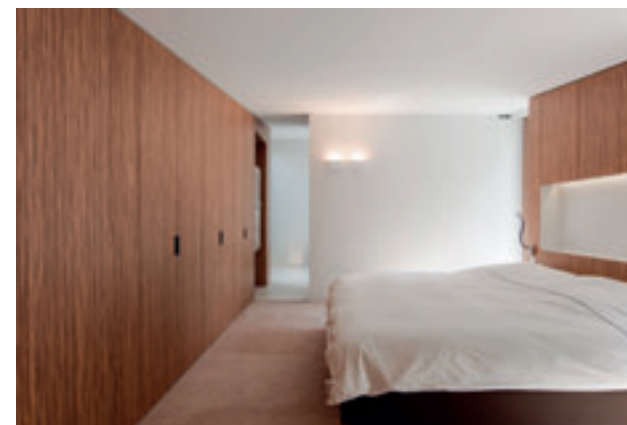
TOP LEFT: Quick-Step Intenso Granola Oak Extra Matt, INT4097

TOP RIGHT: Quick-Step Intenso Merino Grey Oak Extra Matt, INT4115

ABOVE: Quick-Step Intenso Raisin Black Oak Matt, INT4116



PHONE 09 476 0428 WEBSITE [quick-step.co.nz](http://quick-step.co.nz)



LEGGI – 7 NEW WOODGRAINS WITH LIFE LIKE TEXTURES AND ROCKS – 5 NEW STONES WITH HONED OR HEWN TEXTURES



TOP LEFT: Rocks laminate features in a Sydney hair Salon.

TOP RIGHT: Rocks laminate on Italian sliding doors.

ABOVE: Legni woodgrain doors in Brisbane kitchen.

LEFT: Legni wood grain laminate features in European hotel room.

## NEW NATURALS SELECTION FROM ABET LAMINATI

Design Laminates proudly introduces the New Naturals Selection, fresh from Europe.

ABET LAMINATI is Europe's largest laminate manufacturer and for over 60 years has led the market in producing new and exciting design concepts using the best European designers and Italy's manufacturing expertise.

There are over 450 variants in the range, including 120 plain colours, with 80 of them available in textures from high wear gloss to ribbed – all in a hard-wearing, high pressure surface.

The range also includes wood grains, stones, patterns and esoteric designs

from designers like Ettore Sottsass, Alessandro Mendini, Paola Navone and Karim Rashid.

Request a sample folder today and give your next project the wow factor with Abet Laminati from Design Laminates – [sales@deslam.co.nz](mailto:sales@deslam.co.nz) **Contact us today!**



PHONE 09 570 2630 WEBSITE [deslam.co.nz](http://deslam.co.nz)



# INTRODUCING ARDEX WELDTEC™ WATERPROOFING MEMBRANES

The next generation of external waterproofing membranes



Featuring new, state-of-the-art Impervashield technology, ARDEX WeldTec™ Waterproofing Membranes are ARDEX's strongest and most versatile waterproofing membrane yet. The synthetic/polymeric rubber technology resists tearing, cracking, bubbling and adsorption, making it a long-lasting waterproofing solution for exposed areas in all climatic zones.

ARDEX WeldTec™ External Membranes are ideal for use as a double-ply, single-layer membrane on decks and roofs. For damp or imperfect surfaces, ARDEX WeldTec's Fleece-Backed membrane is the perfect solution – providing

excellent ventilation for residual moisture and bonding well to various substrates.

Speed up project completion times with fast and secure heat-welded installation. You can be sure of the membrane's durability with heat-welded laps and seams creating a strong, continuous watertight membrane.

And with lower emissions during application, plus the fact they can be re-blended and therefore recycled, ARDEX WeldTec™ Waterproofing Membranes are the more eco-friendly choice too.

Committed to uncompromising quality, all products come with a 20-year warranty so you can stake your reputation on it. ♦

TOP AND MIDDLE: WeldTec™ membranes are versatile and an ideal solution to external waterproofing in numerous situations.

ABOVE: Showing both sides of the WeldTec™ Fleece-Backed remedial membrane.



PHONE 0800 227 339 WEBSITE [ardex.co.nz](http://ardex.co.nz)



# ARCHITECTURENOW.co.nz

NEWSLETTER SIGN UP:  
[architecturenow.co.nz/newsletter](http://architecturenow.co.nz/newsletter)

EDITORIAL SUBMISSIONS:  
[digital@agm.co.nz](mailto:digital@agm.co.nz)

PUBLISHED BY:  
BCI New Zealand Pty Ltd | Level 2, 409 New North Rd | Kingsland  
Auckland 1021 | +64 9 846 2722









**Mark Todd**

Ockham Residential  
Station R

# Working together to share your vision

Mark Todd from Ockham Residential has a vision. He wants to create buildings that people love to live in. We understand, and that's why we craft elegant high performance windows and doors to help him realise his vision. Visit [altuswindows.co.nz](http://altuswindows.co.nz) to find out more.



Made exclusively by:

